

The Willamette Wildlife Mitigation Program





Background

- Agreement signed October 2010
- \$117 million for wildlife habitat conservation and restoration in the Willamette Basin over 15 years
- Involves the Confederated Tribes of Warm Springs, Grande Ronde, and Siletz
- Initiated a collaborative process for developing and applying the project selection criteria
- Strongly affirmed the value of cost sharing from other entities as an element to include in the project selection criteria
- Defines “dual credit” project provisions related to fish habitat benefits through the Willamette Biological Opinion
- Consistent with NWPPC sub basin plan and Oregon Conservation Strategy objectives

Current Status

- Established the Willamette Wildlife Mitigation Advisory Group with Tribes and regional stakeholders
- Developing project selection and prioritization criteria in a public process
- Coordinating with Willamette BiOp Habitat Technical Team
- Recommended 4 projects for 2011 funding
- Soliciting potential 2012 acquisition projects



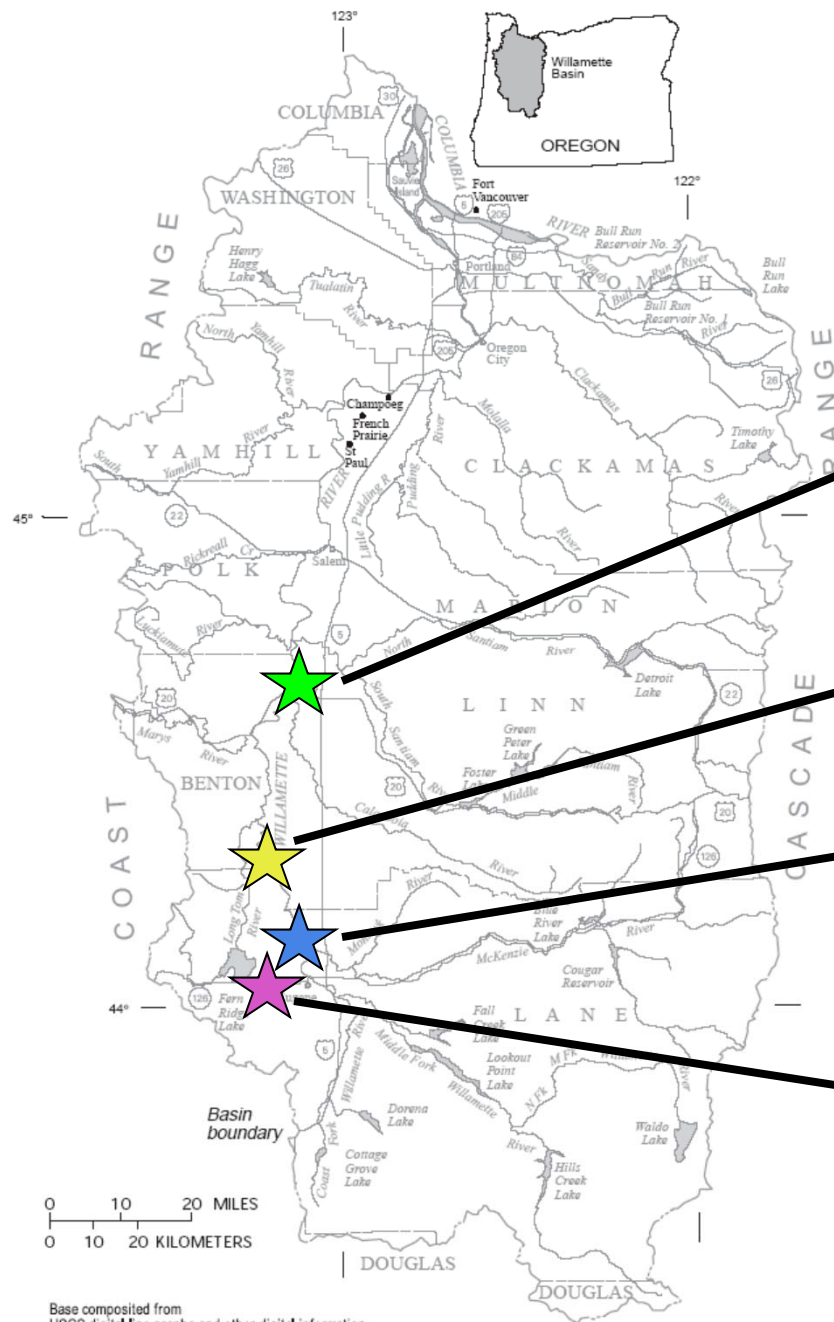
2011 Project Recommendations

Horseshoe Lake, CE + Fee Title, 204 acres

Harkens Lake, CE + Fee Title, 347 acres

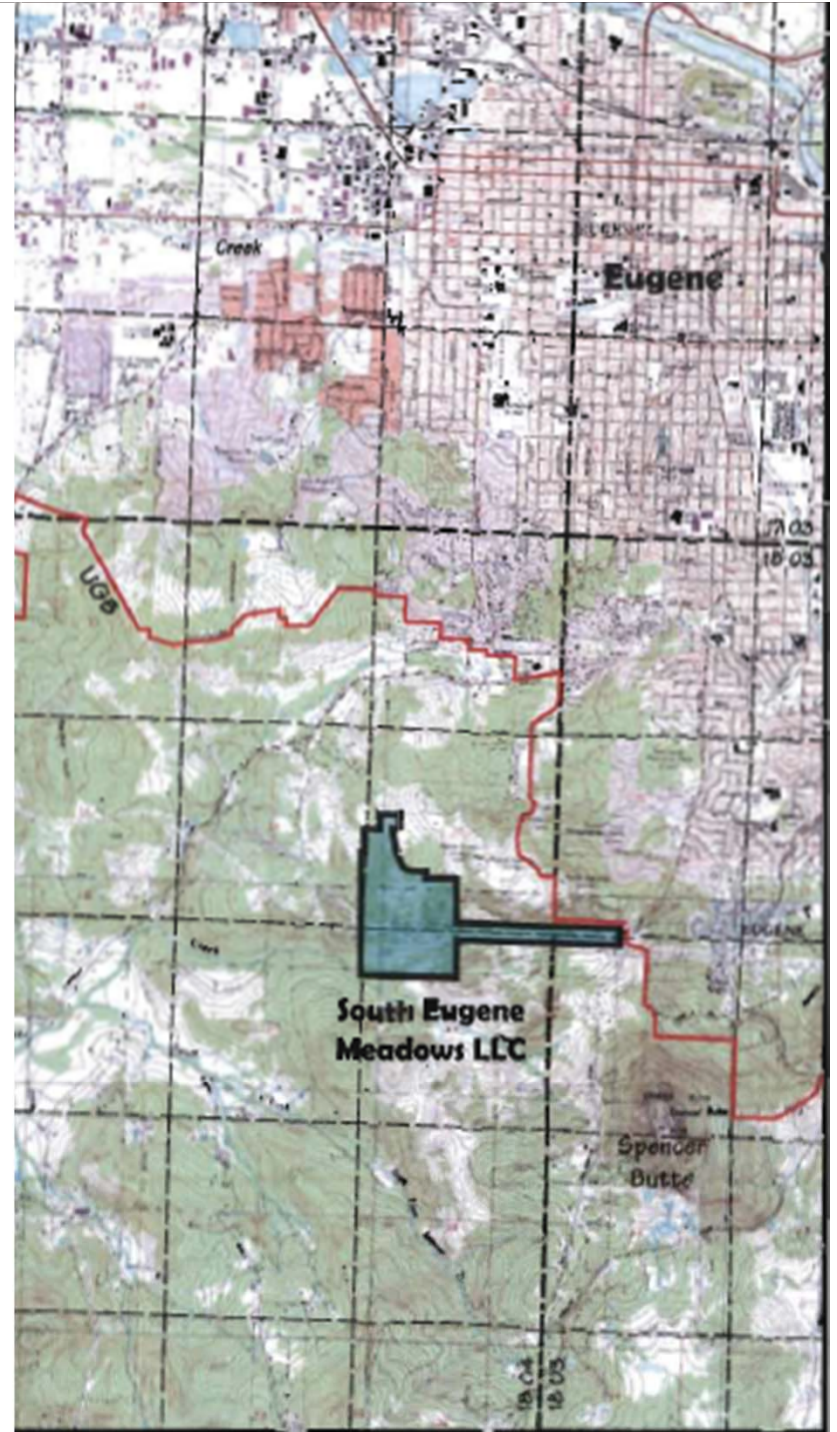
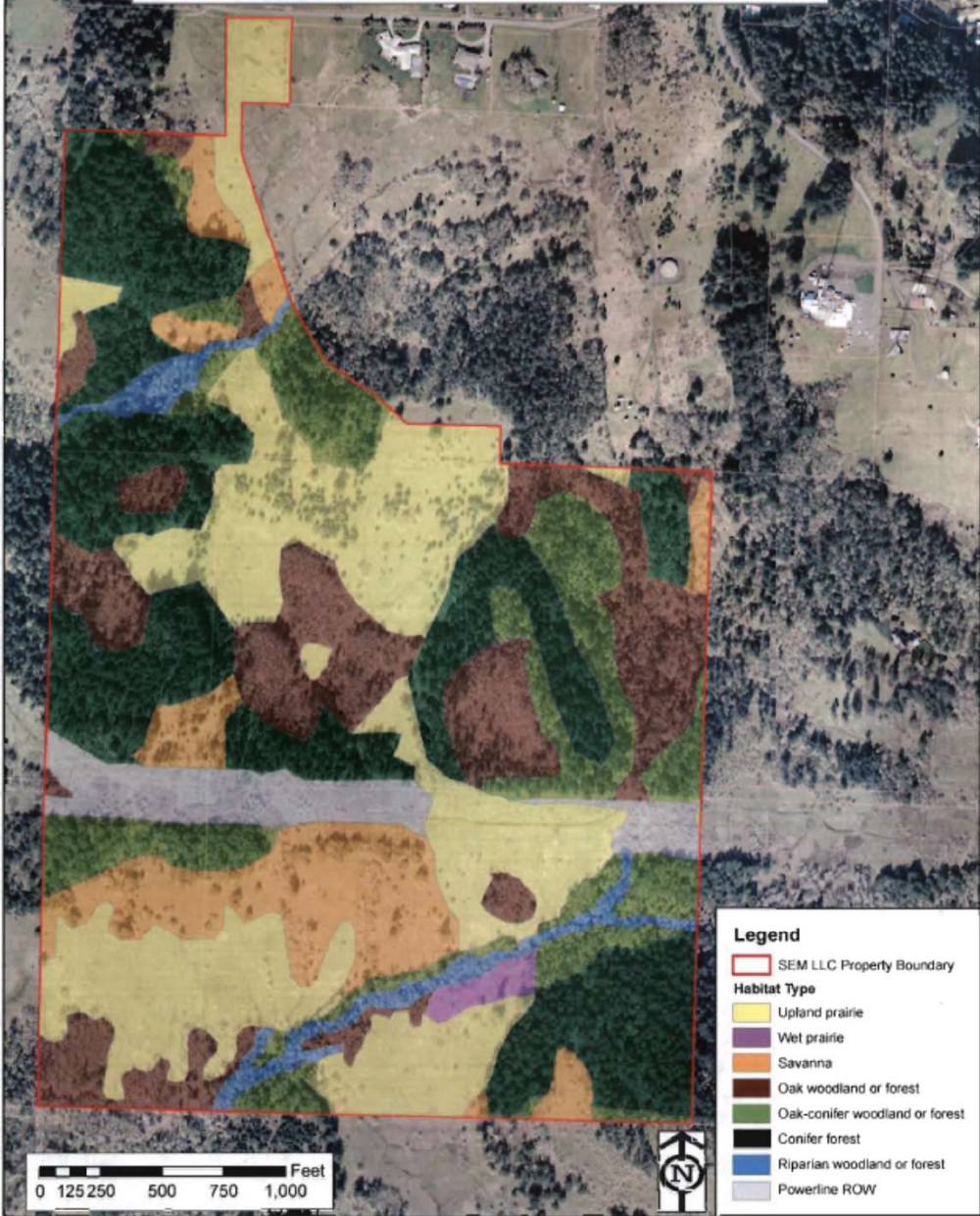
Blue Ruin Island, Fee Title, 25 acres

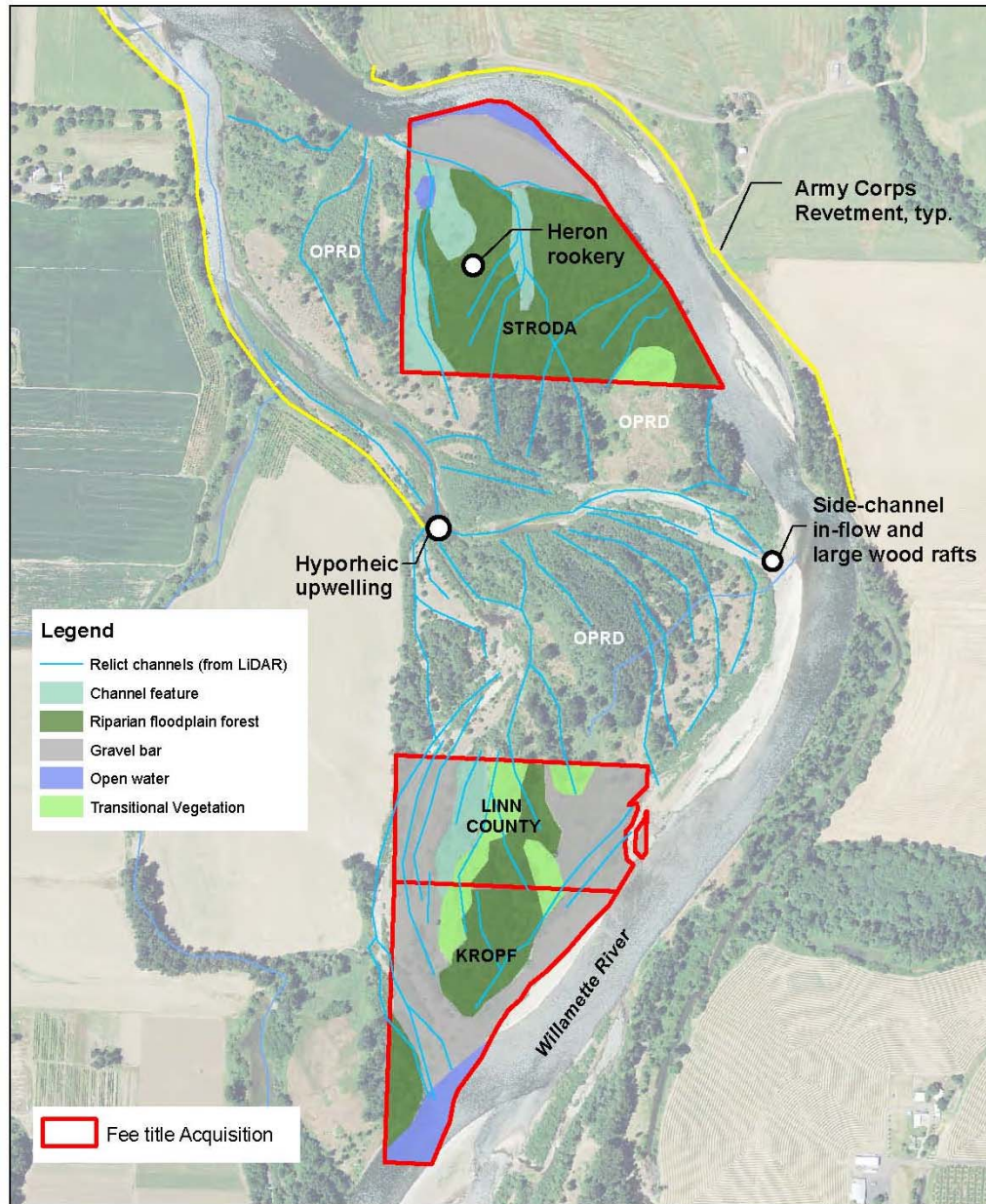
South Eugene Hills, Fee Title, 202 acres



Base composed from
USGS digital line graphs and other digital information.
Universal Transverse Mercator projection, Zone 10
1927 North American Datum

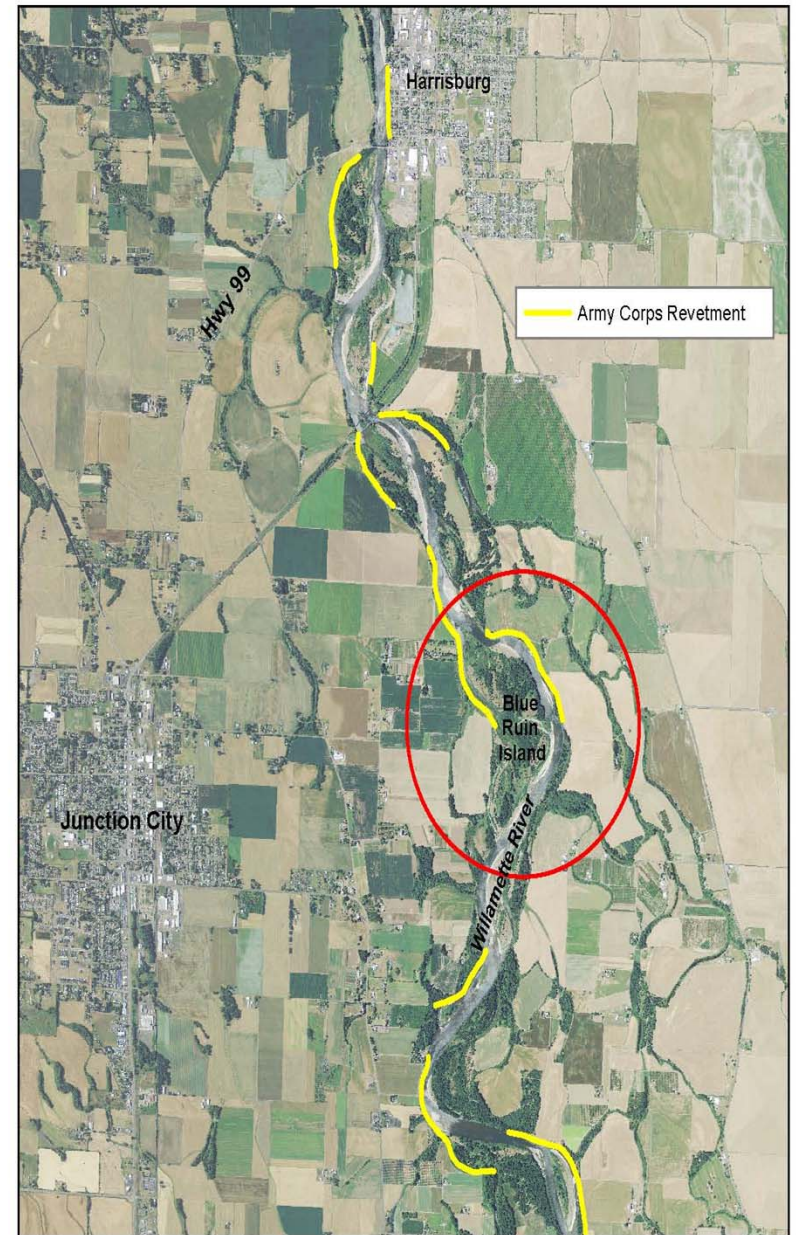
South Eugene Meadows - Habitat Map





MAINSTEM WILLAMETTE RIVER
Blue Ruin Island
 Habitat Types & Features

0.1 0.05 0 0.1 Miles



MAINSTEM WILLAMETTE RIVER
Blue Ruin Island

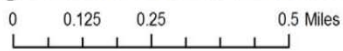
0.3 0.15 0 0.3 Miles



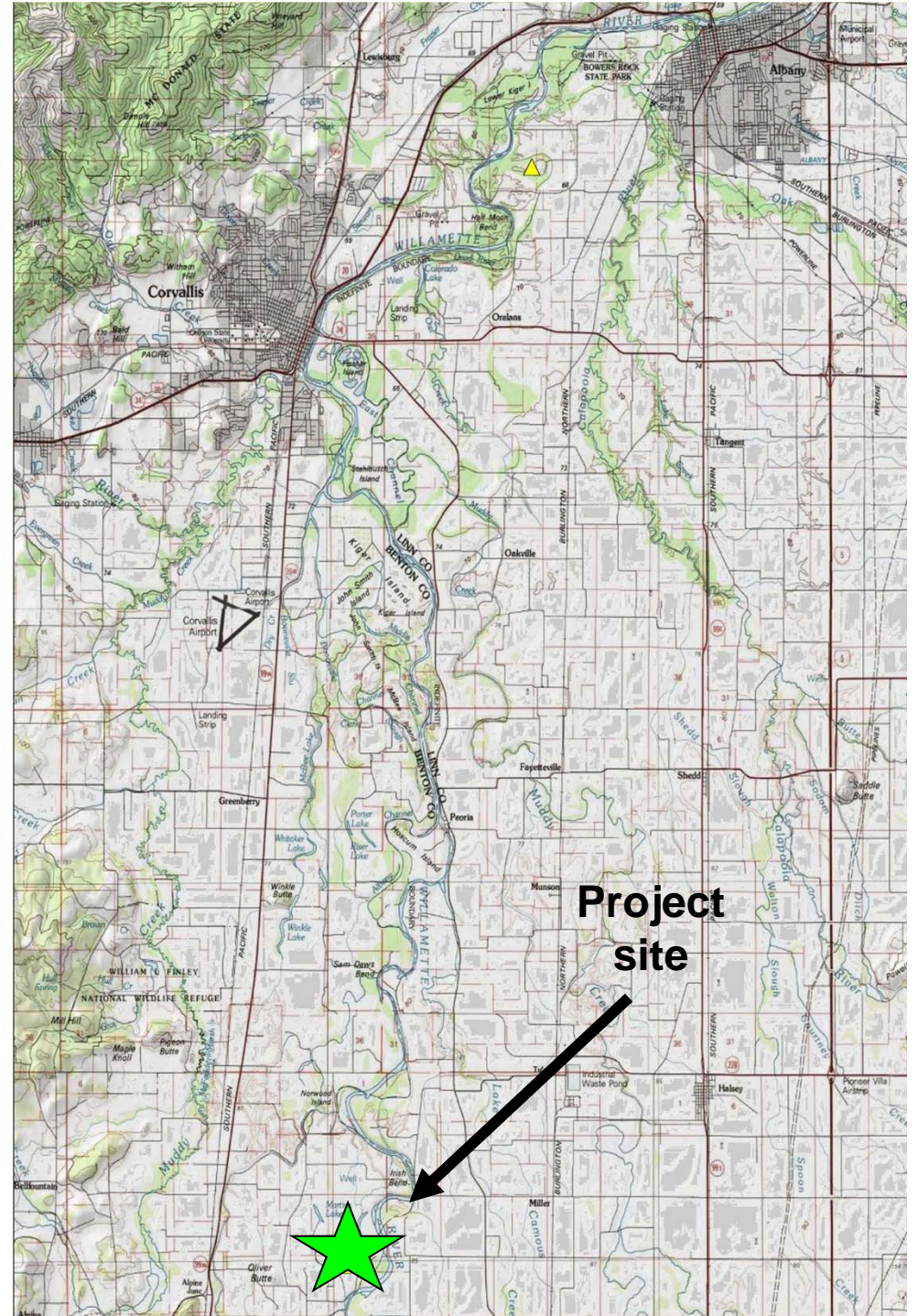
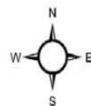


Horning & Adams Taxlots, Benton County

Taxlots



Greenbelt Land Trust, April 2010
2009 Imagery OGIC





Questions?

Laura Tesler

503-947-6086

Laura.Tesler@state.or.us